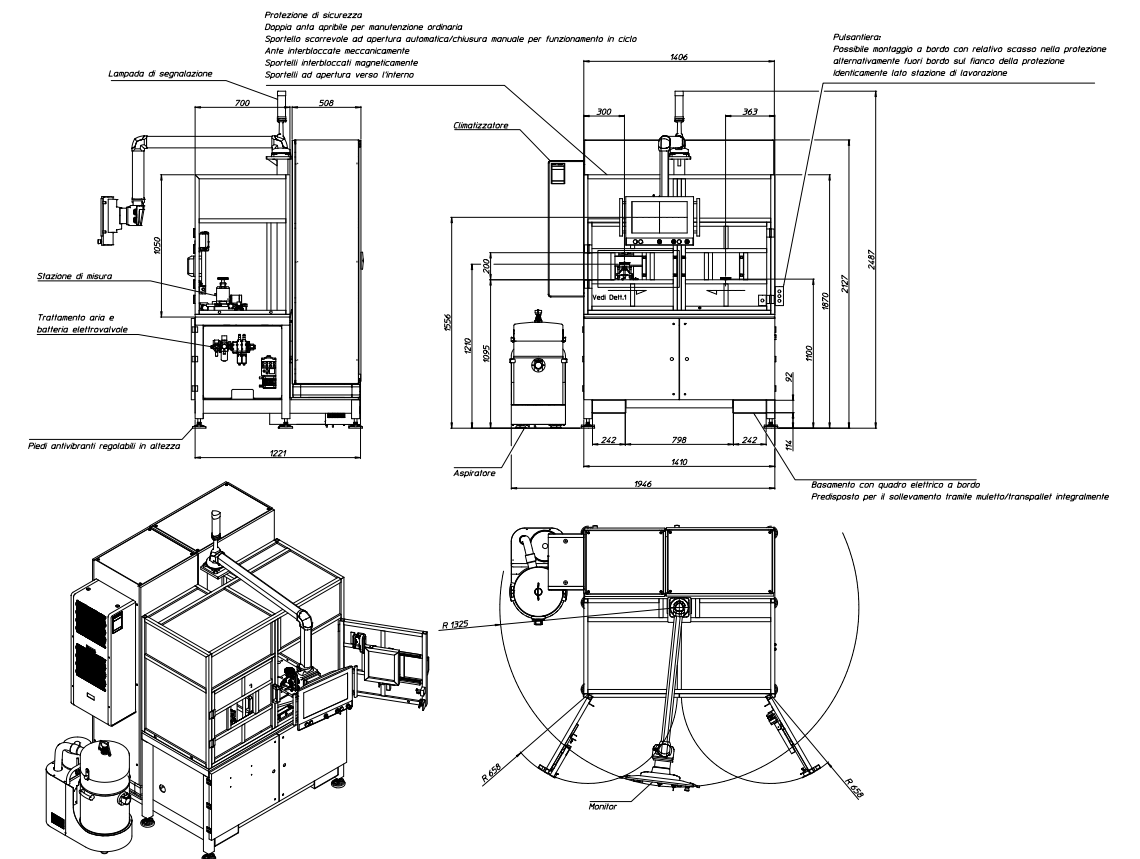
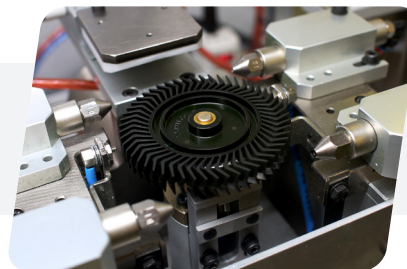
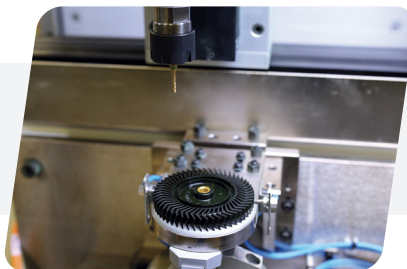
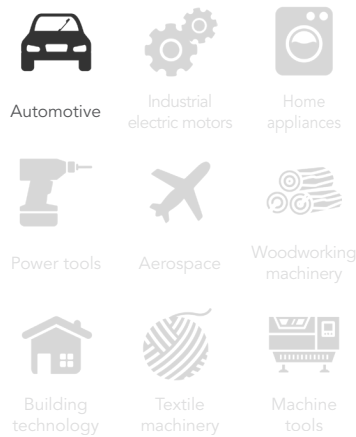


BVK4-5-1A

Semi-automatic balancing machine

Applications



Features

- Semi-automatic balancing machine specifically developed to balance impellers.
- It is a vertical axis balancing machine that can balance the entire spectrum of rotating parts on one plane (static), which are included in its operating range.
- The measurement of the unbalance is done on a station and the correction occurs automatically on a separate station where the removal takes place using an axial drilling.
- Part manipulation is done by the operator.
- Operator interface by industrial PC.
- High level of flexibility and quick changeover.
- Full range of option to meet all the customer's requirements.

Technical data

Parts max weight:	1 kg
Parts max diameter:	100 mm
Unbalance measure speed:	Programmable
Cycle time:	25 s
Dimensions (LxWxH):	1400 x 1220 x 2130 mm
Weight:	2000 kg
Power supply:	380-480 V three-phase 50/60 Hz
Compressed air:	6 bar
Controlled by:	Industrial PC

Options

Industrial vacuum cleaner for removing drilling chips
SPC Software
Tele-service
Calibration Master
DMC reader
Data transfer to customer server