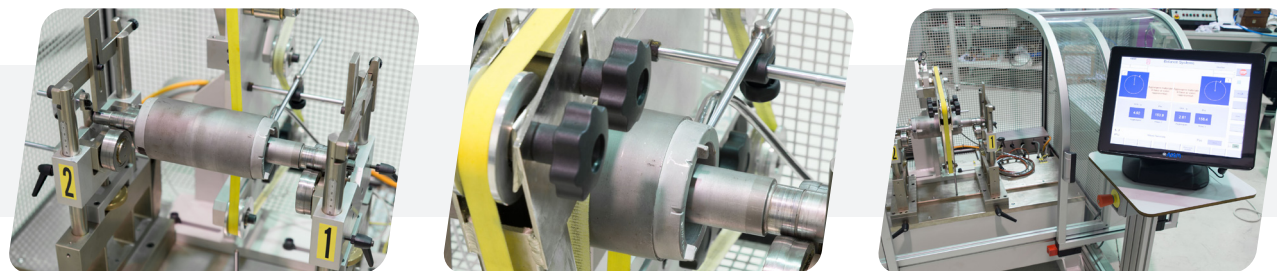
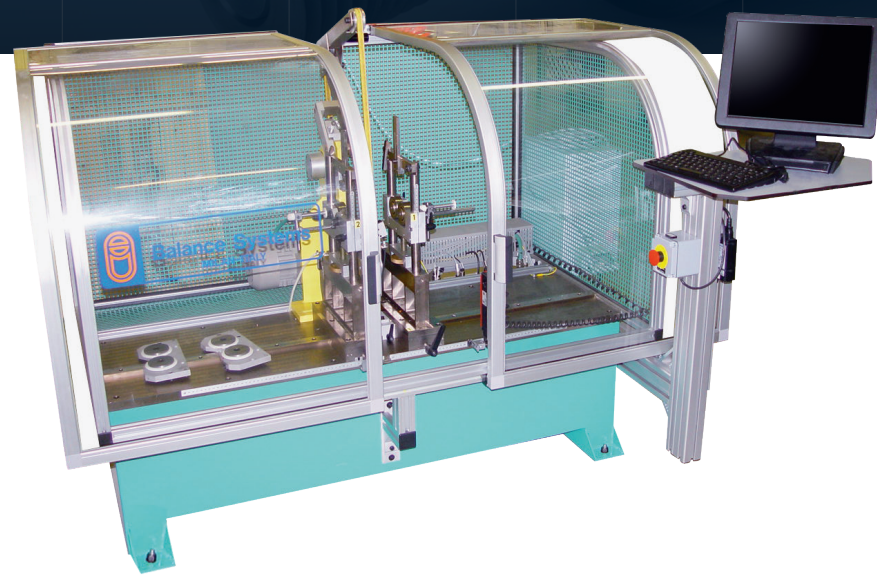
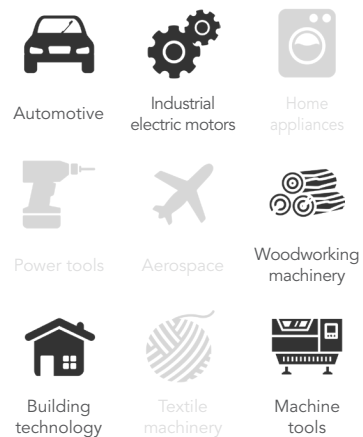


# RB100

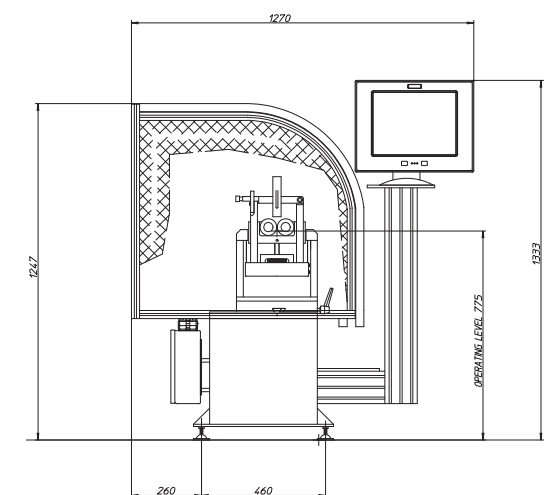
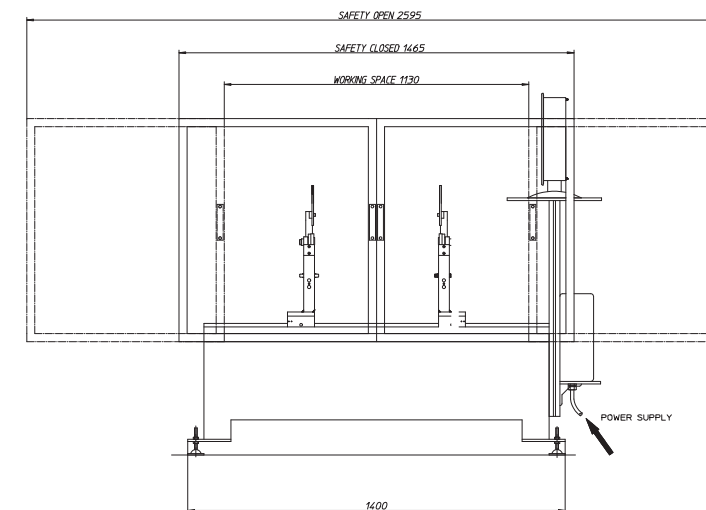
## Manual balancing machine

### Applications



### Features

- The RB100 is a universal horizontal balancing machine provided with hard bearings support. It is capable of performing one (static) and two (dynamic) plane balancing of a wide range of cylindrical rotors, shafts, spindles, etc. weighting between 2 and 100 kilos.
- Operating interface by industrial PC with touch screen.
- The correction of the unbalances is carried out manually and it is performed by an operator through material addition or removal. Manual removal unit has to be provided by user.
- High level of flexibility and quick changeover.



#### Technical data

Parts max weight:	100 kg
Parts max diameter:	550 mm
Unbalance measure speed:	Programmable
Measuring time:	20 s
Dimensions (LxWxH):	500 x 470 x 397 mm
Weight:	700 kg
Power supply:	220 V single-phase 50/60 Hz, 3 kW
Compressed air:	6 bar
Controlled by:	15" Touchscreen Industrial PC

#### Options

Tele-service  
Printer  
Master rotor