



MK3


Manual balancing machine


Applications



Automotive



Industrial electric motors



Home appliances



Power tools


Aerospace


Woodworking machinery


Building technology

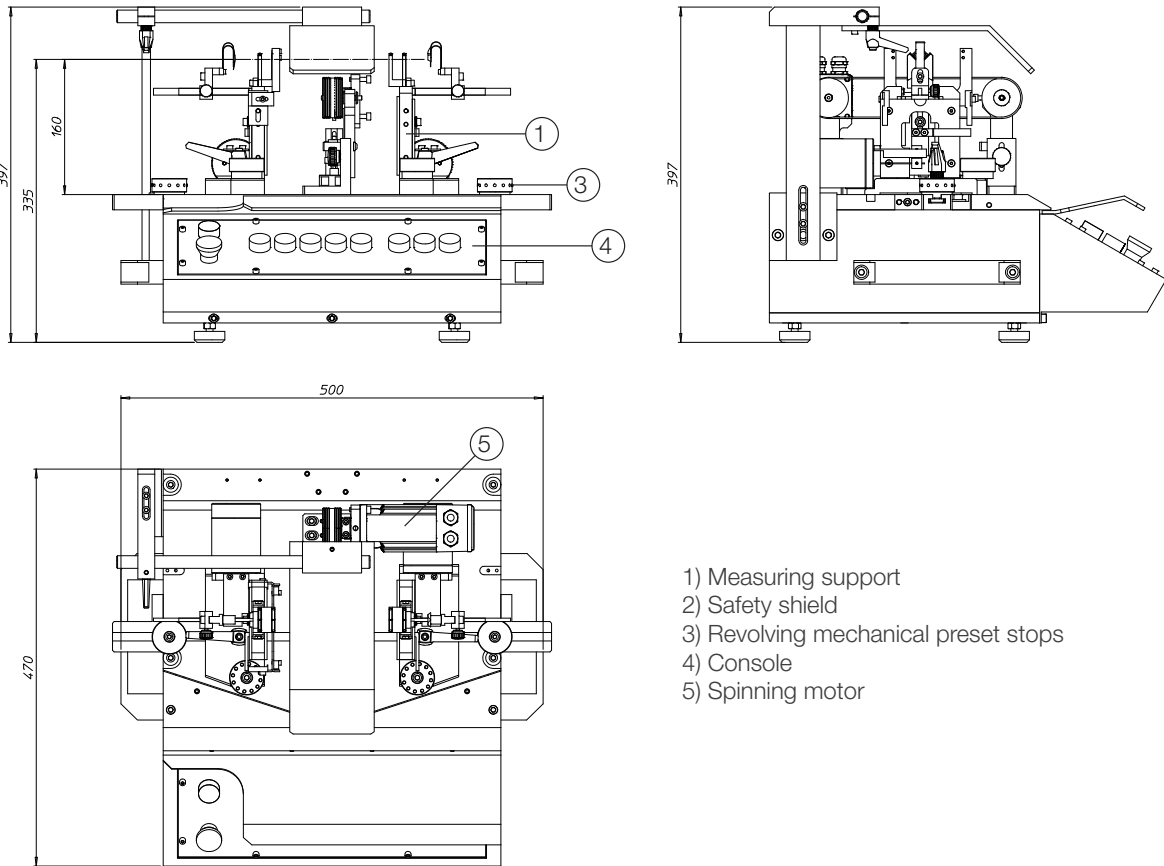

Textile machinery


Machine tools



Features

- MK3 is a general purpose balancing machine recommended for processing small productions or to be used in testing laboratories for production development or to perform quality controls.
- The unbalance correction is carried out manually by adding or removing material.
- This machine is supplied with a mechanical measuring device connected to an industrial PC.
- The unit is equipped with all the devices and tools necessary for rapid and secure changeover.
- Software is available to support the operator to correct unbalances by drilling and by milling.
- The standard machine includes SPC, diagnostics, safety shield.
- MK3 may also be installed in an automatic line so as to act as a sorting machine (GO - NO GO sorter).



- 1) Measuring support
- 2) Safety shield
- 3) Revolving mechanical preset stops
- 4) Console
- 5) Spinning motor

Technical data

Parts max weight:	3 kg
Parts max diameter:	90 mm
Unbalance measure speed:	Programmable
Measuring time:	7 s
Dimensions (LxWxH):	500 x 470 x 397 mm
Weight:	50 kg
Power supply:	220 V single-phase 50/60 Hz, 0.3 kW
Compressed air:	6 bar
Controlled by:	15" Touchscreen Industrial PC

Options

- Table
- Tele-service
- External digital display