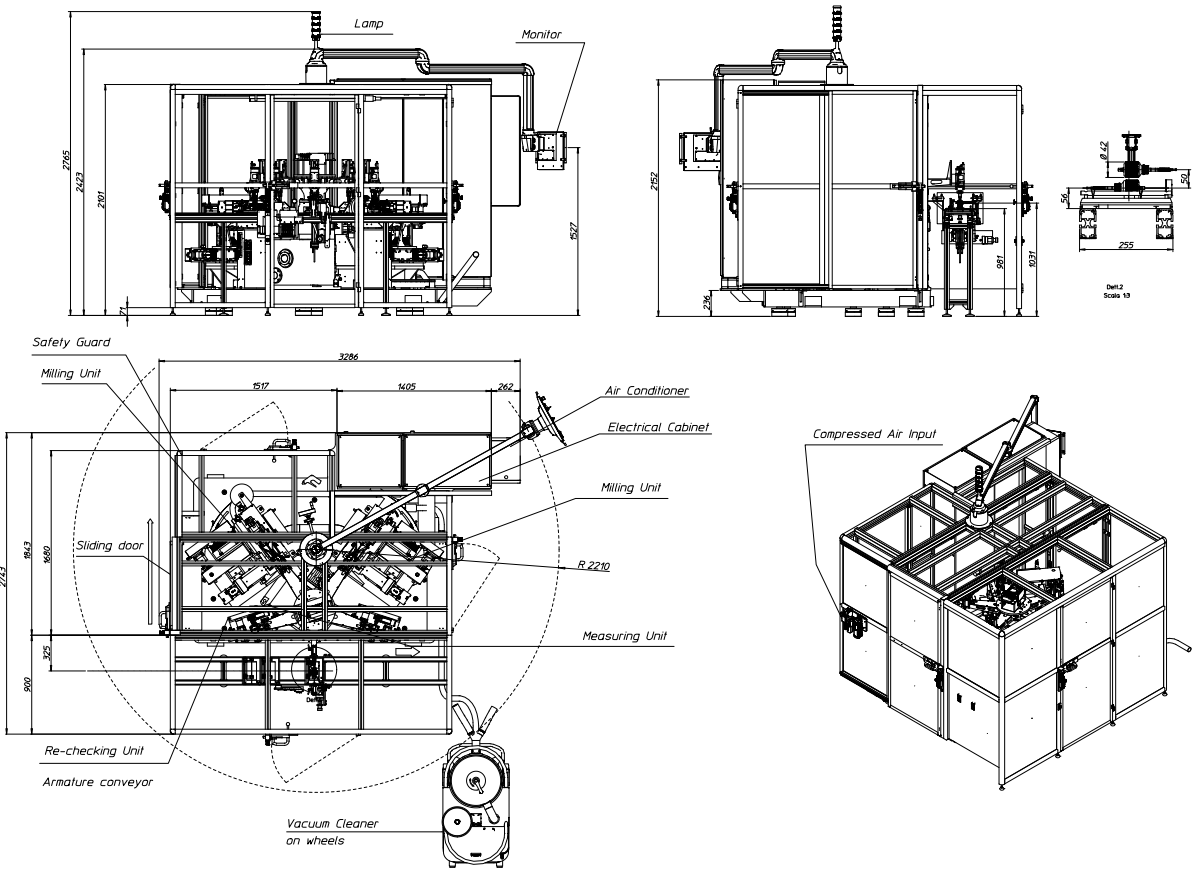
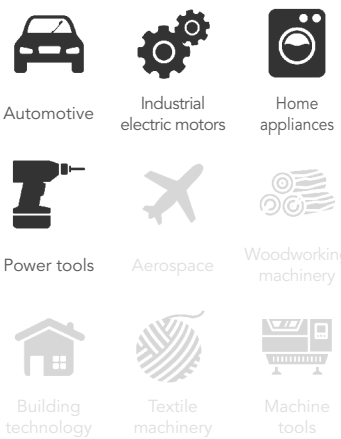


BMK8

Automatic balancing machine

Applications



Features

- Fully automatic dynamic balancing machine for high volume production, suitable for balancing all armatures types.
- It is composed of: a measuring unit, a milling unit for left plane, a milling unit for right plane and an audit unit. Standard configuration with milling in length and depth. Parts manipulation by rotary cam index composed by 5 arms.
- The main applications are in the field of: electrical motors for household appliances, power tools and the automotive industry.
- It can be inserted in any type of lines (pallet, step, by loop, etc.).
- The machine can be delivered (upon request) with "V" or polar cutters.
- Operator interface by industrial PC.
- Modular constructive concept. High level of flexibility and quick changeover. Full range of options to meet all the customer's requirements.

Technical data

Parts max weight:	3 kg
Parts max diameter:	80 mm
Unbalance measure speed:	Programmable
Cycle time:	6 s
Dimensions (LxWxH):	3000 x 2800 x 2400 mm
Weight:	3900 kg
Power supply:	380-480 V three-phase 50/60 Hz
Compressed air:	6 bar
Controlled by:	Industrial PC

Options

- Reject conveyor and telescopic arm for removal of rejected pieces
- Vacuum system for removing milling chips
- SPC/SW
- Teleservice
- Device to balance skewed slots armatures
- Device for quick changeover
- HW & SW for plausibility check of the installed equipment