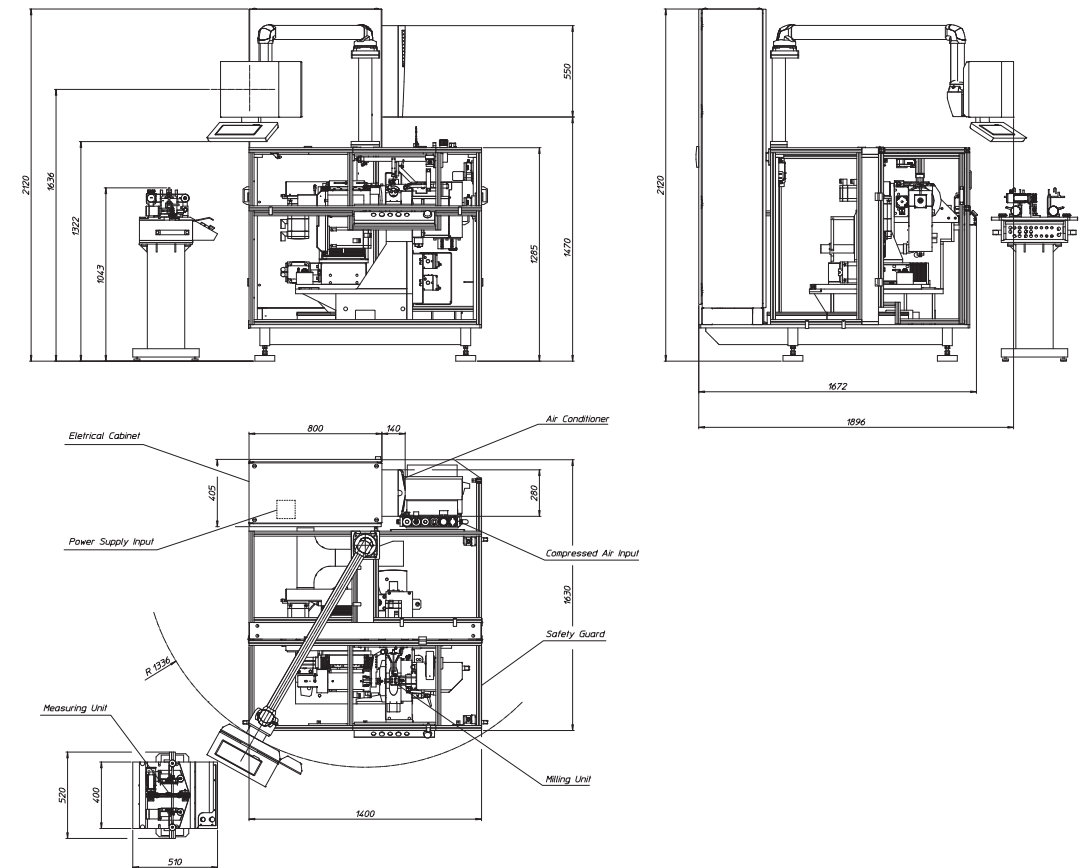
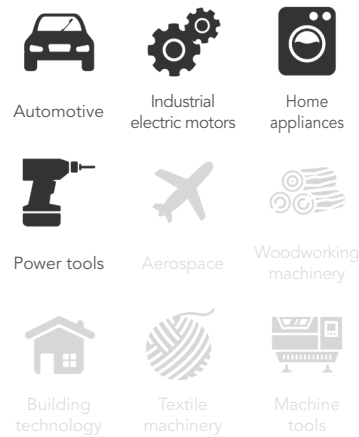


BMK4

Semi-automatic balancing machine

Applications



Features

- Semiautomatic balancing machine for electric motors armatures.
- It is composed of: measuring unit, milling unit for left and right planes and audit unit (optional). Standard configuration with milling in length and depth. Manipulation of the parts to be balanced is done by the operator.
- The machine can be delivered (upon request) with "V" or polar milling cutters.
- Operator interface by industrial PC.

Technical data

Parts max weight:	3 kg
Parts max diameter:	85 mm
Unbalance measure speed:	Programmable
Cycle time:	10 s
Dimensions (LxWxH):	1700 x 1400 x 2200 mm
Weight:	1400 kg
Power supply:	380-480 V three-phase 50/60 Hz
Compressed air:	6 bar
Controlled by:	Industrial PC

Options

- Industrial vacuum system for milling chips
- SPC/SW
- Device for skewed slots armatures
- Devices for quick changeover
- Audit unit