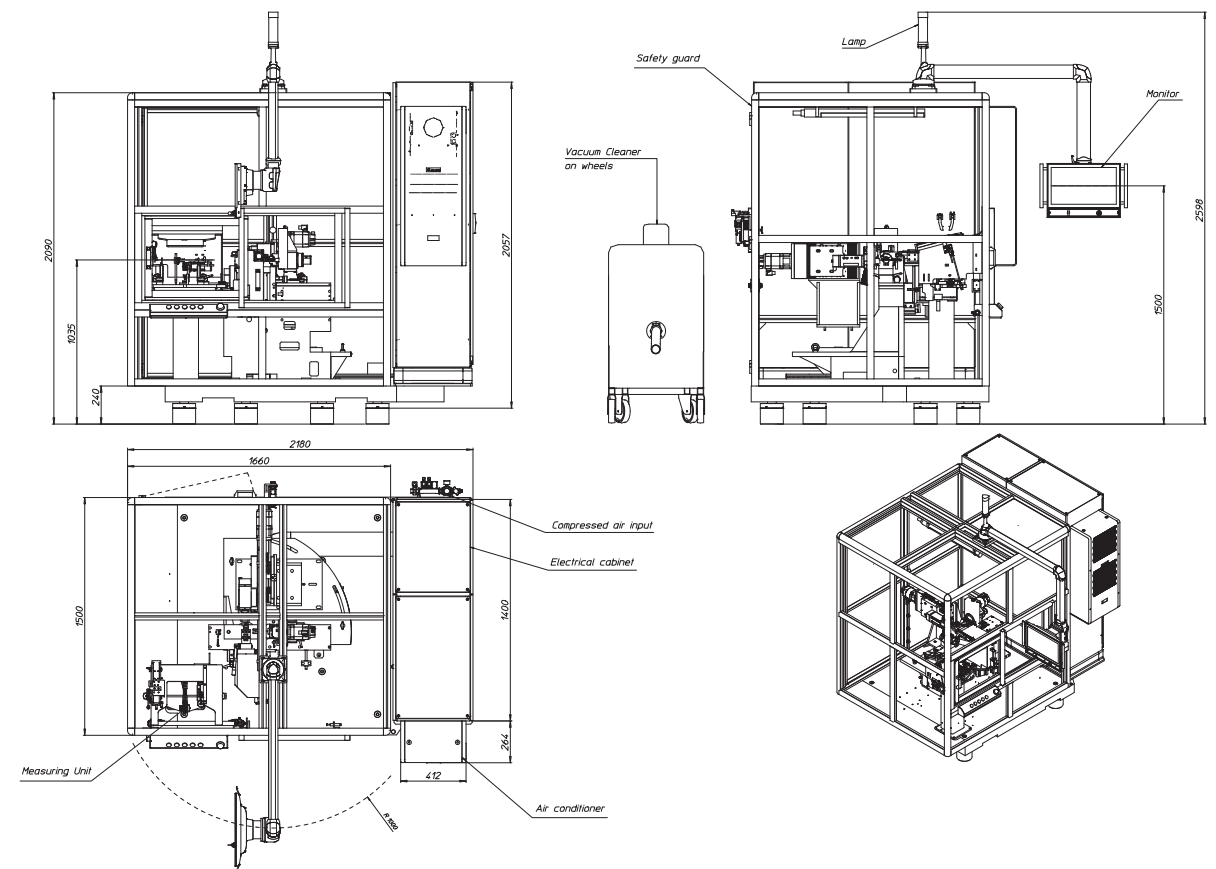
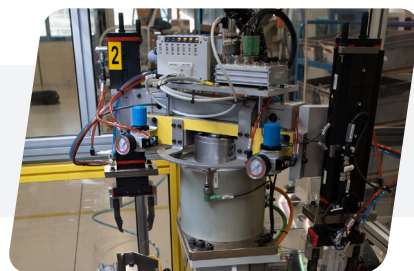
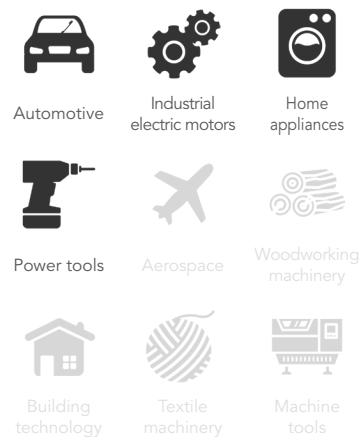


BMK4-A

Semi-automatic balancing machine

Applications



Features

- Semi-automatic balancing machine for electric motors armatures.
- It is composed of: one measuring unit, one milling unit for left and right planes and pneumatic pick and place for the manipulation of the parts (from measuring unit to milling unit and vice versa). The audit of the balanced armatures is carried out by the same and sole measuring unit. Standard configuration with milling in length and depth.
- The machine can be delivered (upon request) with "V" or polar milling cutters.
- Manual loading / unloading.

Technical data

Parts max weight:	3 kg
Parts max diameter:	85 mm
Unbalance measure speed:	Programmable
Cycle time:	15 s
Dimensions (LxWxH):	1950 x 1500 x 2000 mm
Weight:	2000 kg
Power supply:	380-480 V three-phase 50/60 Hz
Compressed air:	6 bar
Controlled by:	Industrial PC

Options

- Teleservice
- SPC/SW
- Vacuum system to remove the milling chips
- Device to balance skewed slots
- Device for quick changeover
- HW & SW for plausibility check of the installed equipment